

# THE ALPHASHOW OF *Cinderella*

Social & Emotional Learning Theme:

**SELF-WORTH, KINDNESS and REPRESSED SADNESS**

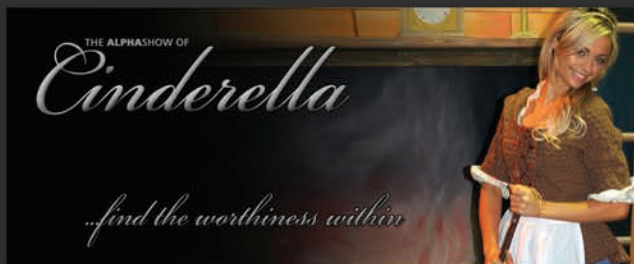


## Worthy of Love

How can a poor servant stepchild find her inner self-worth and have the confidence to meet the prince? Let your children discover their own sense of love for themselves as the Fairy God-mother creates more magic than you'd expect.

## Relevant for today

We all struggle with feelings of not 'being enough'. Through humour and sensitivity, we move the audience beyond these illusions of unworthiness.



## Full Musical Production

Cleverly adapted musical numbers bring a modern feel, with full production values, sound and a full theatre quality lighting rig and set.

## Non-stop hilarity

So much energy and humour, by far the funniest version of this story you'll ever experience! Great characterisations from the stepsisters and others, come dance on stage and have a ball!



Booking enquiries:

**1300 850 658**

Touring schedule available here:

[www.alphashows.com.au/schedule/](http://www.alphashows.com.au/schedule/)

**Suitability:** Prep - Year 9

**Duration:** 70 minutes + Question Time

**Venue:** Any indoor hall, gym or MPR with van + trailer access for our whole visit

**Space needed:** 9m x 8m cleared space

**Height:** At least 3.5m, preferably 4.5m

**Minimum attendance:** 125 students

**Cost:** \$12 per child + GST (whole school)

\$15 per child - GST (partial school)

"Good messages within. You Can Do It program - good links. Good teacher support pack. A great performance!!! Thanks. As always it was fantastic. Another great performance". - Jackie Alexander, George St PS

"Once again, absolutely BRILLIANT! Loud, clear, full of expression. Very clever and witty (script). I could not see a single student who was not engaged during the entire performance -> very hard act to follow." - Lisa Veysey, Guthrie St PS

"Terric role models for primary students, especially popular with senior kids, which is always a great yardstick. Teacher Support Material is very comprehensive with pre-show/post-show ideas. The show gives teachers considerable material for literacy. Of high relevance and value to our curriculum. CONGRATULATIONS AND THANKS TO YOU ALL." - Marg Roberts, Kunyung PS

"One of the strengths was the play/musical comedy and that it appealed to the various ages in different ways yet still conveyed the social messages the story revolves around. Excellent...the survival of fairytales is critical to continued development of literacy skills. This show goes a long way to assist this (as well as encouraging performing arts)." - Val Lockwood, Healesville PS

"Well organised, very professional and a great integration into various levels/subjects. That is English, integrated values" - Patricia Amerena, Coburg West PS

To read more feedback, go to <http://www.alphashows.com.au/testimonials/>

For more information, visit [www.alphashows.com.au](http://www.alphashows.com.au)  
or email [bookings@alphashows.com.au](mailto:bookings@alphashows.com.au)

**1300 850 658**

You can also book  
with Nexus Arts!

**NEXUS  
ARTS**